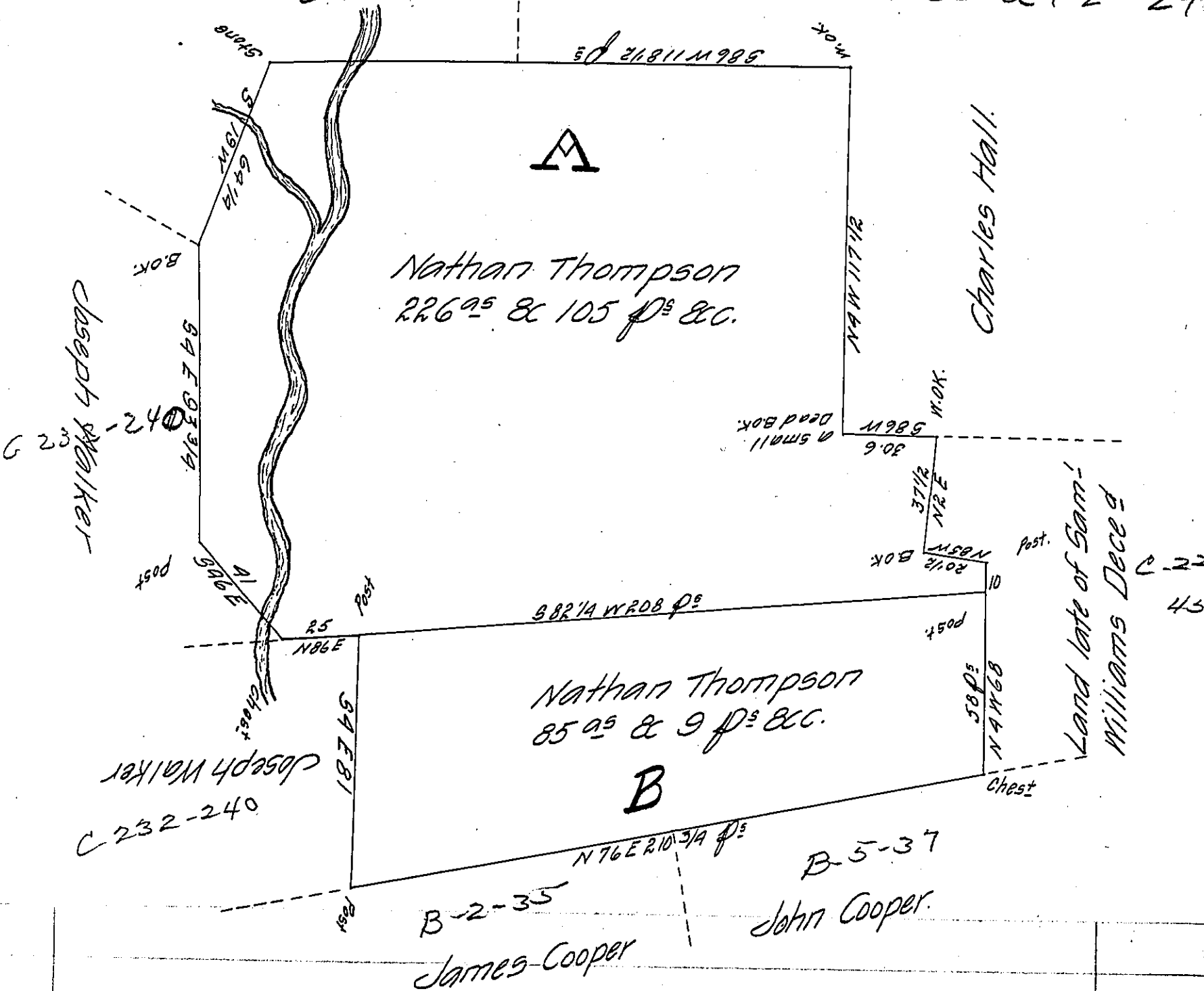


Widow Patterson
Daniel Pettit
C-120-243

See a 12-296



The above are two Draughts of two Tracts of Land situate in Sadsbury Township Lancaster County, The Tract A containing 226^{ac} & 105^p and the usual Allowance of Six per Cent for Roads &c. Surveyed the 28th Day of June A.D. 1786 for Nathan Thompson By Virtue of a Warrant Dated the 8th Day of June A.D. 1786 &c. and the Tract B containing 85^{ac} & 9^p & the allow^e aforesaid. Surveyed on the 16th Day of March A.D. 1786 for the aforesaid Nathan Thompson, by Virtue of a Warrant Dated the 17th Day of December A.D. 1785, &c.

To John Lukens Esq^r S.G. J^r Henry Pearm D.S.

IN TESTIMONY that the above is a copy of the original remaining on file in the Department of Internal Affairs of Pennsylvania, made conformably to an Act of Assembly approved the 16th day of February, 1833, I have hereunto set my Hand and caused the Seal of said Department to be affixed at Harrisburg, this twenty fifth day of March 1907.

Isaac P. Pearson
Secretary of Internal Affairs.